

AIR SUPPLY COMPRESSOR INSTALLATION

⚠ WARNING

WARNING: Use protection equipment, especially for feet, hands, eyes and ears.
Keep to all relevant accident prevention regulations and national regulations.

⚠ WARNING

WARNING: When jacking the car make sure the correct jacking points are used. Consult owner's manual, service manual or contact the car dealer. To avoid serious injury or death it is absolutely necessary not to perform any work under a not properly jacked car.

⚠ WARNING

WARNING: Burn hazard! The compressor could be hot from previous operation. Let it cool off before servicing.

⚠ WARNING

WARNING: The air suspension system is under pressure. Prior to disassembly disconnect power and relieve pressure. Consult owner's manual on how to disconnect the battery.

⚠ CAUTION

CAUTION: Damage to the vehicle and air suspension system can be incurred if work is carried out in a manner other than specified in the instructions or in a different sequence.

⚠ Only qualified personnel of a service workshop are to perform repair work on a cars air suspension system.

⚠ Use the diagnostic software of the car manufacturer and follow its instructions.

1. BEFORE REPAIR

No.	IMPORTANT OPERATIONS TO BE PERFORMED	CHECKED
1	Inspect whole air suspension system for air leakages (air struts, air springs, pipes, valve block, air connectors etc.). If necessary follow manufacturer's instructions for repair of broken components to avoid damage of compressor or loss of warranty.	
2	Inspect whole electrical infrastructure of air suspension system (relay, electrical wires, electrical connectors etc.). If necessary follow manufacturer's instructions for repair of broken components to avoid damage of compressor and loss of warranty.	
3	Start repair work only when you have read and understood all information required for repair.	
4	Use only spare parts released by car manufacturer or AMK.	
5	Do not damage air lines and cables.	

COMPRESSOR EXAMPLE



1. Bracket assembly points
2. Isolation (decoupling) mounting bracket
3. Air intake
4. Air outlet
5. Electrical connection

2. REMOVAL OF OLD COMPRESSOR / COMPRESSOR ASSEMBLY

1. Disconnect power from the battery
2. Release pressure from the system
3. Disconnect power cables from compressor and solenoid valve cable
4. Disconnect air lines from compressor
5. Loosen and remove hardware connection between car and compressor / assembly
6. Take out compressor / assembly

3. ADDITIONAL INSPECTION UPON COMPRESSOR REMOVAL

⚠ Inspect compressor to identify root cause of the compressor failure and breakdown.

- If there is corrosion in the air intake check air intake pipe and filter, as there might be water. If necessary replace damaged elements.

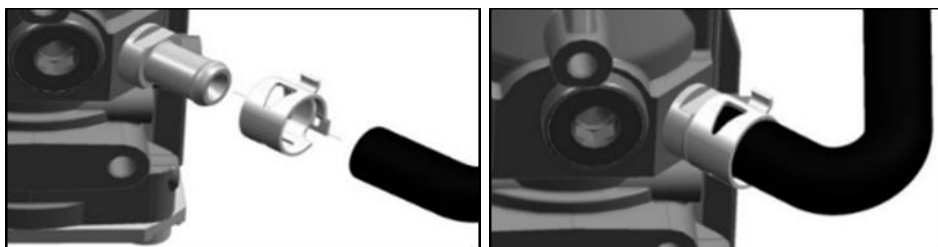
- If the compressor has a burning smell, check relay and electrical connections. If necessary replace damaged elements.
- If the compressor has a burning smell, check all components of the air system (air lines, air springs, struts, valve block) for leaks. If necessary replace damaged elements.

4. INSTALLATION OF NEW COMPRESSOR

Perform steps as described in point 2, but in reverse sequence.

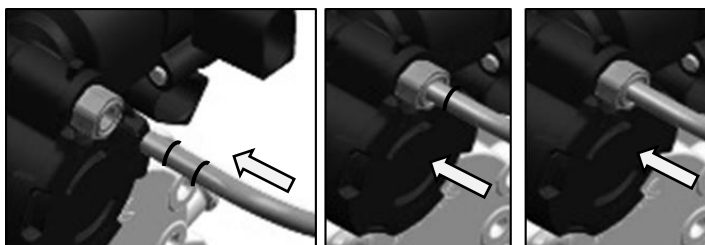
No.	IMPORTANT OPERATIONS HINTS	CHECKED
1	Do not remove any screw, air fitting, pipe or any other accessory from the new compressor, as it may cause damage and loss of warranty.	
2	Do not allow dirt, water or grease to enter the air suspension system during repair. Clean air intake pipe.	
3	Use only spare parts released by car manufacturer or AMK.	
4	Do not damage air lines and cables.	
5	It is mandatory to replace relay, according to car manufacturer service instruction.	
6	It is mandatory to replace air filter, according to car manufacturer service instruction.	

AIR INTAKE CONNECTION



⚠ Make sure there is not dust, dirt, water in the air intake pipe and filter

AIR OUTLET CONNECTION



Designation VOSS	Hose diameter
Thread M8x1	4 mm
Thread M10x1	6 mm
Thread M12x1	8 mm

⚠ Follow instructions of the air connectors manufacturer (www.voss.de)

ELECTRICAL CONNECTION



MOTOR



SOLENOID VALVE



POLARITY



PLUGS



⚠ Do not allow dirt, dust, water to enter electrical connection (sockets and plugs).

COMPRESSOR MOUNTING POINTS

⚠ WARNING

WARNING: Risk of damage! Perform proper assembly of mounting brackets, compressor hardware, compressor assembly, isolation kits using specified below torques.

Torques

- mounting screw M6x12 for bracket assembly to compressors 10,5 + 1 Nm
- isolation/decoupling on mounting point of compressor to car 11,5 + 0,5 Nm
- all other nuts and bolts according to manufacturer's specification

Isolation Kits

Mercedes-Benz		BMW	
M-Class, GL-Class, S-Class, CL-Class, R-Class	Vito, Viano	5 series	X5 series, X6 series
W164, X164, W166, X166, W221, C216, W222, W251	W639, V639	E61	E70, E71
AMK # 404684	AMK # 402656	AMK # 404685	AMK # 404686
⚠ Follow sequence of isolation kit components installation:			